

罐底球阀

TANK BOTTOM BALL VALVE

16/17



快装三片式气动全包罐底球阀
Quick install three piece pneumatic full
package tank bottom ball valve

原理 PRINCIPLE :

罐底球阀配有特殊罐底连接面法兰，用于焊接在反应罐或容器底部，其端部轮廓和半径具有有效的重力排放作用，平滑的锥形孔和罐内超近距离的球体可防止介质在阀门入口处堆积，确保排泄畅通。

This ball valve with special tank bottom flange connection, be welded on the tank bottom. The design of contour and radius have effective gravity discharge function. Also smooth taper hole and the sphere closely to the bottom, which prevent the medium from staying at the entrance of valve. Make sure drain smoothly.

设计特点 DESIGN FEATURES:

流体阻力小，其阻力系数与同长度的管段相等

结构简单、体积小、重量轻

操作方便，开闭迅速，从全开到全关只要旋转90°，便于远距离控制。

维修方便，结构简单，密封圈拆卸更换比较方便

紧密可靠，球阀的密封材料使用PTFE，在全开或全闭时，球体和阀座的密封面与介质隔离，介质通过时，不会引起密封面的侵蚀。

连接方式：快装、焊接、螺纹、法兰

尺寸:1" -4" 标准：3A、DIN、SMS、IDF、RJT、BPE、ISO

Small fluid resistance, resistance equal to same length section of pipe

Simple structure, small volume, light weight

Easy to operate, open and close rapidly, from fully open to fully closed only 90 degree rotation, convenient remote control.

Easy maintenance, simple structure, convenient to disassembly and replacement the seal

ice seal , PTFE sealing, at fully open or fully closed, sphere and the sealing surface of valve seat are Isolate with medium.

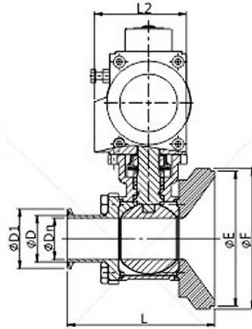
When medium transiting, these will not cause erosion of sealing surface.

Connection: clamp, weld, thread, flange

Size: 1" -4" Standard: 3A,DIN,SMS,IDF,RJT,BPE,ISO

罐底球阀

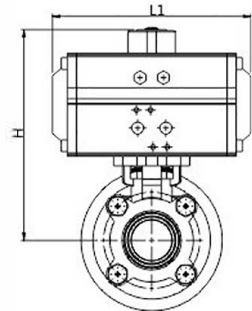
TANK BOTTOM BALL VALVE



3A 快装三片式气动全包罐底球阀

3A HIGH PLATFORM QUICK INSTALL TANK BOTTOM BALL VALVE

SIZE	ΦD_n	ΦD	$\Phi D1$	ΦF	L	L1	H
1"	22.1	25.4	50.5	120	106	145	146
1.5"	34.8	38.1	50.5	120	125	169	181.5
2"	47.5	50.8	64	150	140	169	188.5
2.5"	60.2	63.5	77.5	180	155	201	216.5
3"	72.9	76.2	91	212	176	209	239.5
4"	97.4	101.6	119	248	210	242	264



NO.RVB160201

DIN 快装三片式气动全包罐底球阀

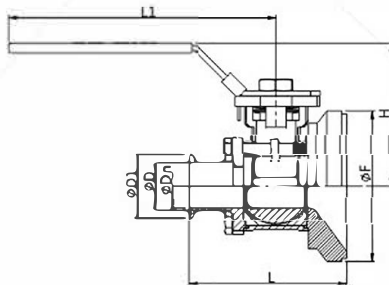
DIN HIGH PLATFORM QUICK INSTALL TANK BOTTOM BALL VALVE

SIZE	ΦD_n	ΦD	$\Phi D1$	ΦF	L	L1	H
DN25	25	28	50.5	120	106	145	146
DN40	37	40	50.5	120	125	169	181.5
DN50	49	52	64	150	140	201	188.5
DN65	66	70	91	180	155	209	224.5
DN80	81	85	106	212	176	275	251.5
DN100	100	104	119	248	210	242	264

3A 快装三片式手动全包罐底球阀

3A MANUAL QUICK INSTALL TANK BOTTOM BALL VALVE

SIZE	ΦD_n	ΦD	$\Phi D1$	ΦF	L	L1	H
1"	22.1	25.4	50.5	120	106	170	78
1.5"	34.8	38.1	50.5	120	125	173	98
2"	47.5	50.8	64	150	140	173	107
2.5"	60.2	63.5	77.5	180	155	223	130
3"	72.9	76.2	91	212	176	335	153
4"	97.4	101.6	119	248	210	335	169



NO.RVB160202

DIN 快装三片式手动全包罐底球阀

DIN MANUAL QUICK INSTALL TANK BOTTOM BALL VALVE

SIZE	ΦD_n	ΦD	$\Phi D1$	ΦF	L	L1	H
DN25	25	28	50.5	120	106	170	78
DN40	37	40	50.5	120	125	173	98
DN50	49	52	64	150	140	173	107
DN65	66	70	91	180	155	223	130
DN80	81	85	106	212	176	335	153
DN100	100	104	119	248	210	335	169